

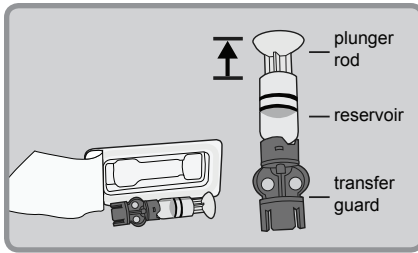
To Rewind the Piston in the Pump:



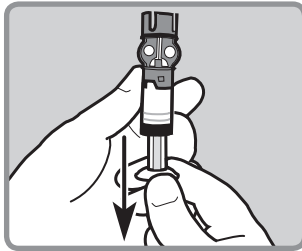
1. Wash your hands. Remove old infusion set from your body and the reservoir from pump.
2. Go to **Reservoir + Set** in **MAIN MENU**, then select **Reservoir Setup** to open **REWIND** screen. Press **ACT** to rewind.

To Fill the Reservoir:

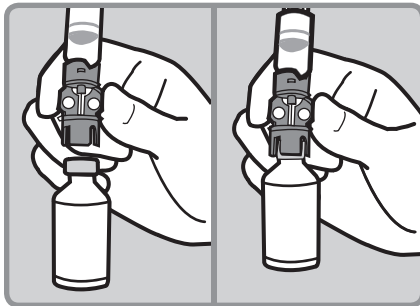
1. Remove reservoir from package.



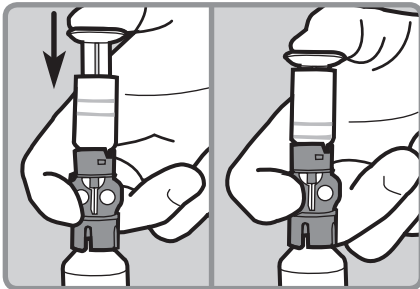
2. Pull plunger rod down to fill reservoir with air



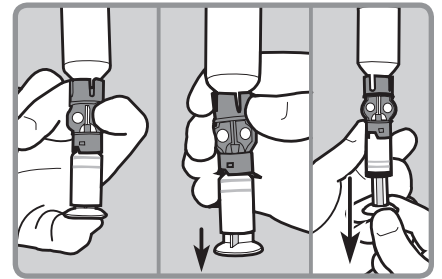
3. After wiping top of insulin vial with alcohol, hold blue transfer guard and press it down onto insulin vial until fully pushed into place.



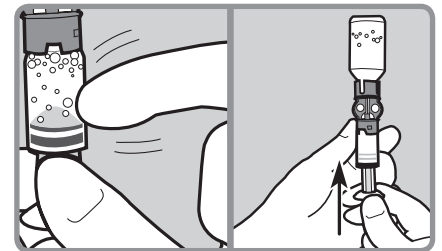
4. Use thumb to push air from reservoir into vial. Continue to hold plunger rod down.



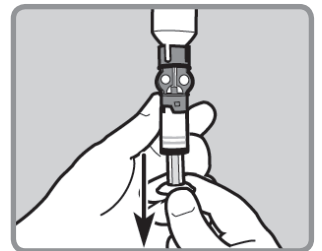
5. Continue to hold plunger rod down as you turn vial over (vial should now be on top and reservoir on bottom). Release plunger. Then slowly pull plunger rod down to fill reservoir with insulin.



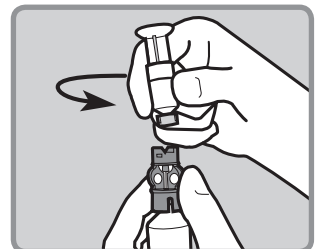
6. Check reservoir for air bubbles. Tap side of reservoir to force bubbles to rise to top of reservoir. Push plunger rod up to push air bubbles into insulin vial.



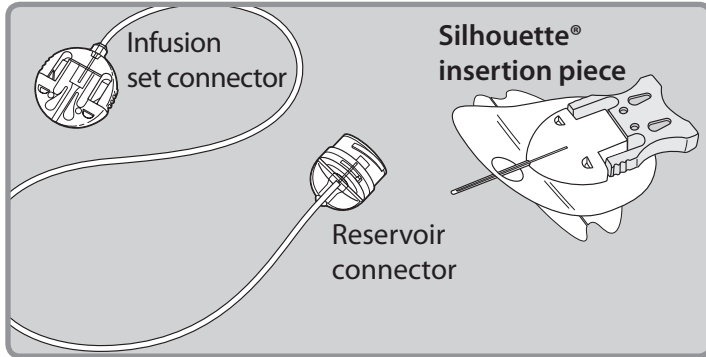
7. After air bubbles are removed, pull plunger rod back down to fill reservoir with enough insulin to last 2-3 days.



8. Flip vial over so it is now on bottom. Hold blue transfer guard with one hand. With other hand turn reservoir counter-clockwise and pull it straight up until disconnected from blue transfer guard. Disconnect transfer guard and dispose into a sharps container.

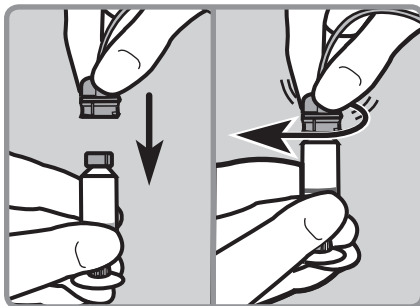


To Connect the Tubing:

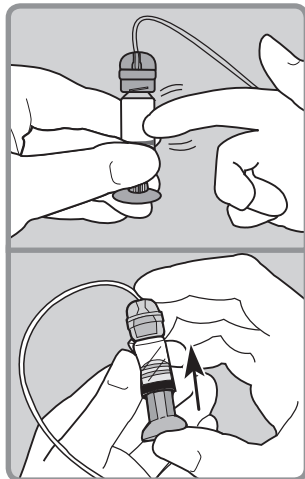


1. Remove Silhouette from package.

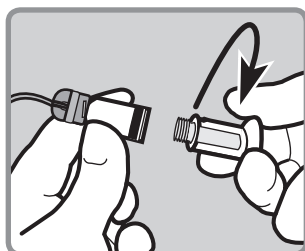
2. Hold reservoir in one hand. With other hand gently push connector onto top of reservoir and turn clockwise until it slides and locks into place.



3. Tap side of reservoir to force any remaining air bubbles to rise to top. Push up on plunger rod until bubbles are out and a small amount of insulin is in tubing.

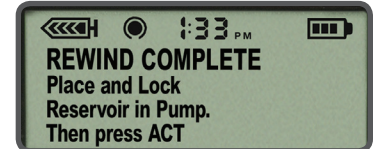
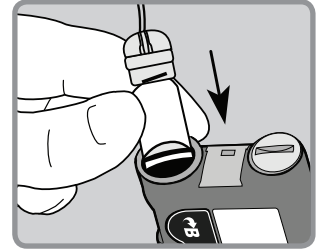


4. Turn plunger rod counter-clockwise until it unscrews from reservoir. Be careful not to pull out plunger rod from reservoir or insulin will spill out.

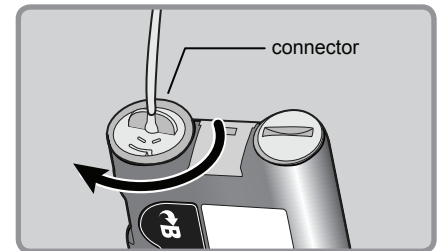


To Fill the Tubing:

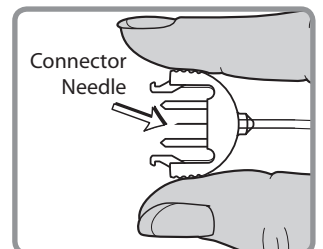
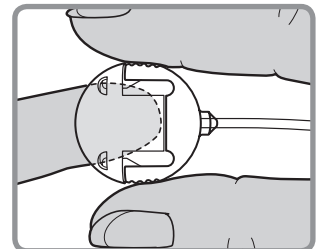
1. Press **ACT** so that **REWIND COMPLETE** appears. Insert newly filled reservoir into pump's reservoir compartment.



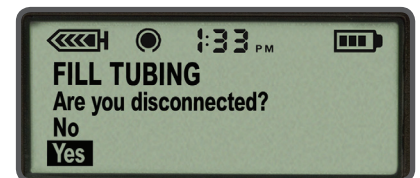
2. Turn reservoir clockwise until it locks in place.



3. Press and hold edges of infusion set connector. With other hand pull cap to remove it.

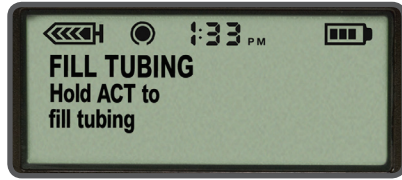


4. Press **ACT** to go to **FILL TUBING** screen. Be sure infusion set is **NOT** connected to your body. Then select **Yes** and press **ACT**.

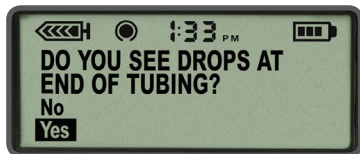
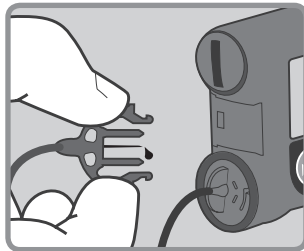


To Fill the Tubing:

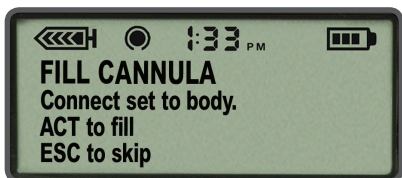
- Press and hold **ACT** to fill tubing. The pump will beep as tubing fills. Release **ACT** when you see drops at tip of connector needle. Then press **ESC**.



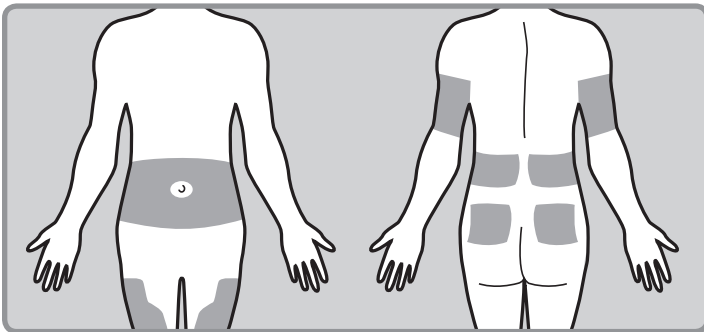
- If you see drops at end of connector needle and there are no air bubbles in the tubing, select **Yes** and press **ACT**.



- When the **FILL CANNULA** screen appears, you are ready to insert the Silhouette® infusion set.



Choose Insertion Site:



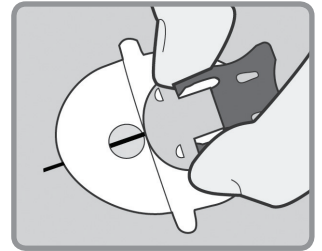
The best areas of the body to insert infusion set are shown in shaded areas of this drawing.

Wipe the selected insertion site with alcohol or other antiseptic wipe.

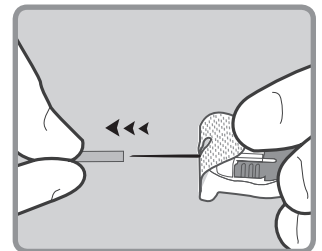
To Insert Silhouette Infusion Set (Two Methods):

Method 1 - By Hand

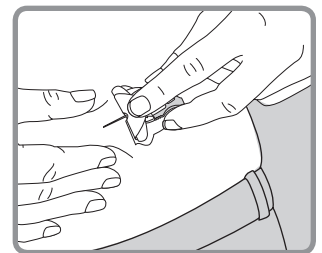
- Hold Silhouette® insertion piece by gray needle handle using thumb and middle finger.



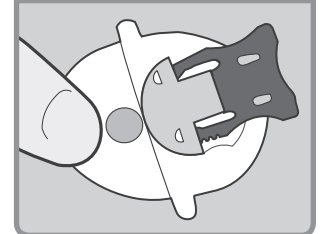
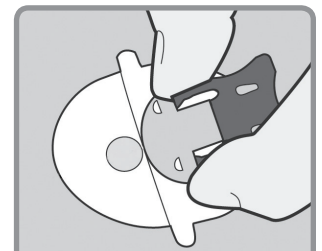
- Hold back tape with forefinger and remove needle guard that protects needle.



- Pinch up skin at prepared site. Use other hand to insert needle at a 20-45 degree angle.



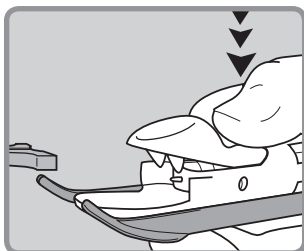
- After it is inserted release the skin and hold inserted piece in place. Now go to section on "To Remove Introducer Needle".



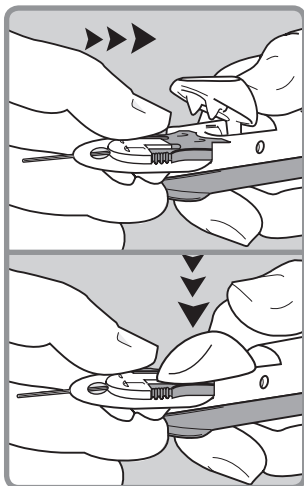
To Insert Silhouette® Infusion Set:

Method 2 - By Sil-serter®

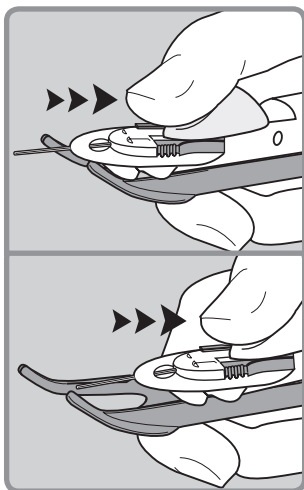
1. Use thumb to press down on Lock & Release handle of Sil-serter®.



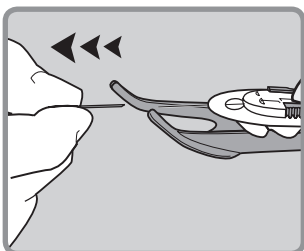
2. Place Silhouette® insertion piece inside Sil-serter® and let go of the Lock & Release handle. The serter should fit securely into the holes of the insertion piece.



3. Use thumb to slide Lock & Release handle back until you hear a click.

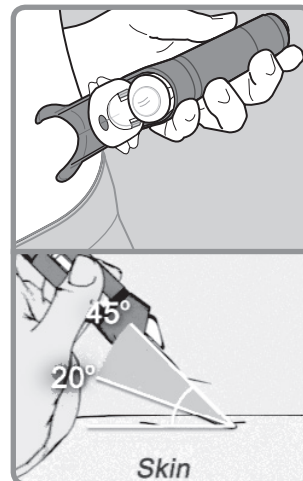


4. Gently pull off needle guard.

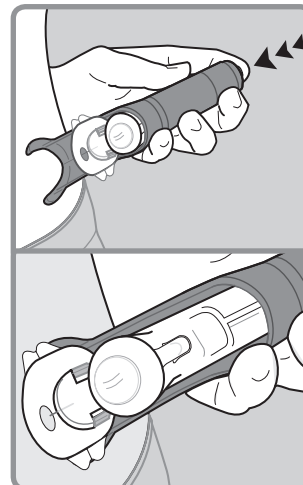


To Insert Silhouette® Infusion Set:

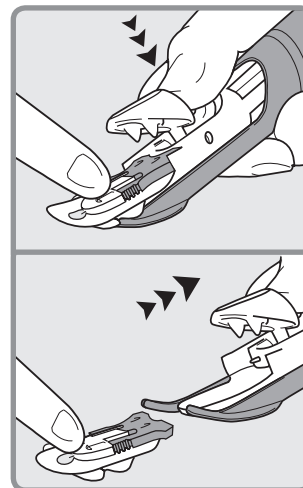
5. Rest arms of Sil-serter® against skin so that serter is at a 20-45 degree angle.



6. Press the white button at top of serter to insert the infusion set.

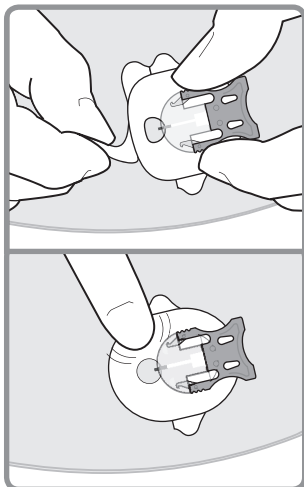


7. Hold Silhouette® in place against skin with one hand. With the other hand press Lock & Release handle using thumb to open serter. Then, slide serter back from Silhouette®.

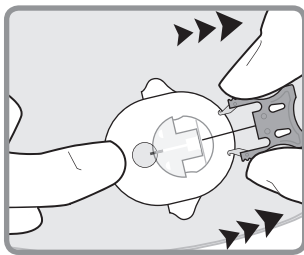


To Remove Introducer Needle:

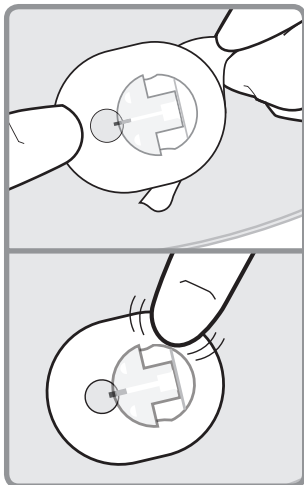
1. Peel paper from front part of adhesive and press adhesive securely to skin.



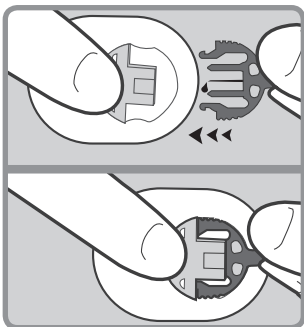
2. Squeeze arms on gray needle handle and pull backwards to remove introducer needle.



3. Peel rest of paper without lifting infusion set too far from skin. Press adhesive securely to skin.

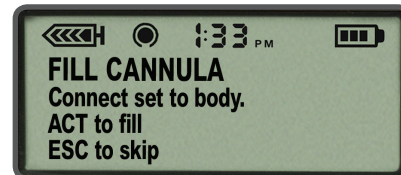


4. Connect infusion set tubing by sliding end of tubing into infusion set on skin.



To Fill Cannula:

1. At **FILL CANNULA** screen, press **ACT**.



2. Use **▲** to enter 0.7 units of insulin to fill cannula under skin. Press **ACT**.

