

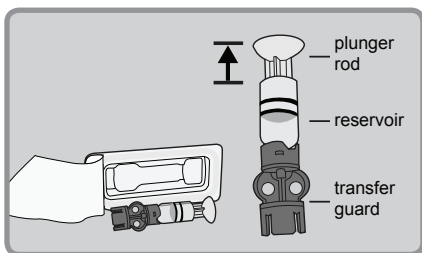
## To Rewind the Piston in Pump:



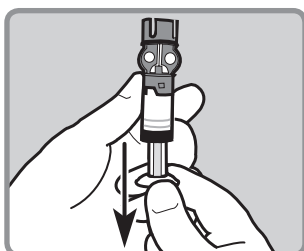
1. Wash your hands. Remove old infusion set from your body and the reservoir from pump.
2. Go to **Reservoir + Set** in **MAIN MENU**, then select **Reservoir Setup** to open **REWIND** screen. Press **ACT** to rewind.

## To Fill the Reservoir:

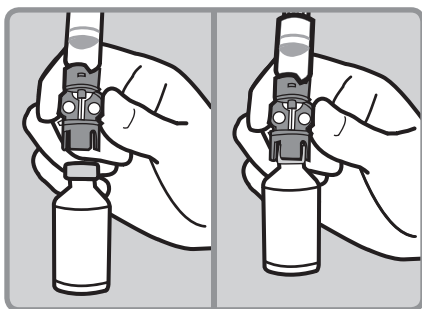
1. Remove reservoir from package.



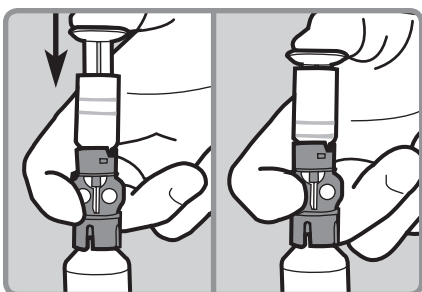
2. Pull plunger rod down to fill reservoir with air.



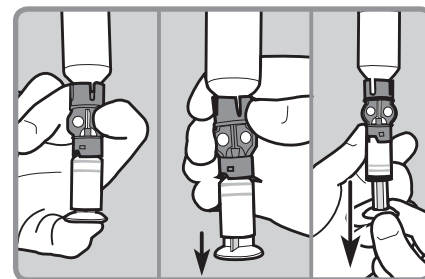
3. After wiping top of insulin vial with alcohol, hold blue transfer guard and press it down onto insulin vial.



4. Use thumb to push and hold plunger rod down to pressurize vial.



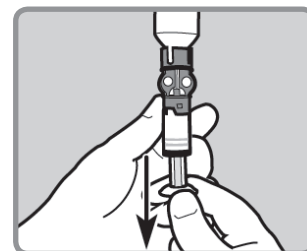
5. Continue to hold plunger rod down as you turn vial over (vial should now be on top and reservoir on bottom). Release plunger. Then slowly pull plunger rod down to fill reservoir with insulin.



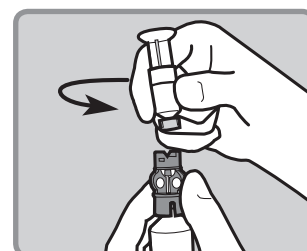
6. Check reservoir for air bubbles. Tap side of reservoir to force bubbles to rise to top of reservoir. Push plunger rod up to push air bubbles into insulin vial.



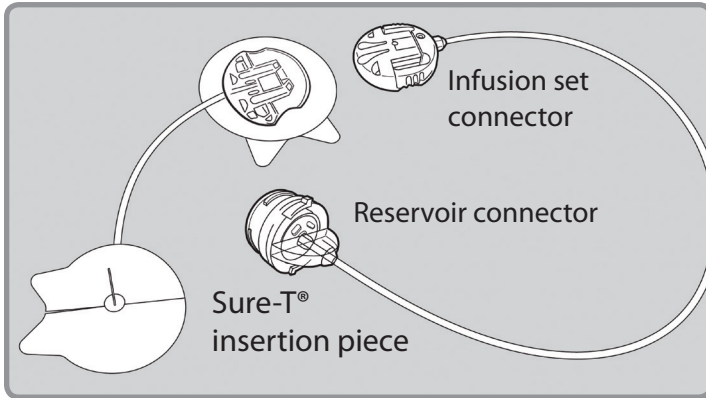
7. After air bubbles are removed, pull plunger rod back down to fill reservoir with enough insulin to last 2-3 days.



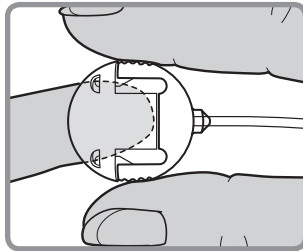
8. Flip vial over so it is now on bottom. Hold blue transfer guard with one hand. With other hand turn reservoir counter-clockwise and pull it straight up until disconnected from blue transfer guard.



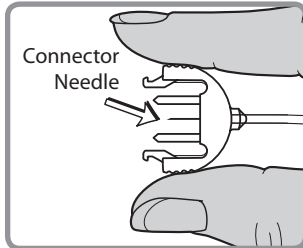
## To Connect the Tubing:



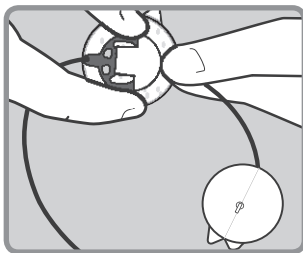
1. Remove Sure-T® from package.



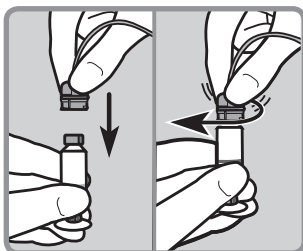
2. Press the edges of infusion set connector. With other hand pull cap to remove it.



3. Slide infusion set connector into remainder of infusion set.

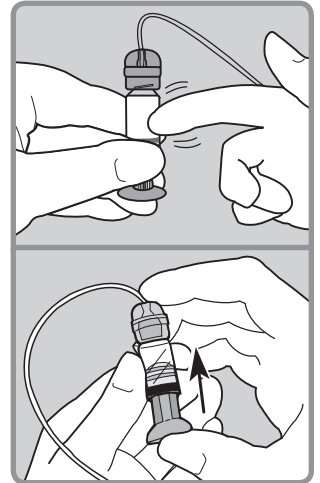


4. Hold reservoir in one hand. With other hand gently push connector onto top of reservoir and turn clockwise until it slides and locks into place.

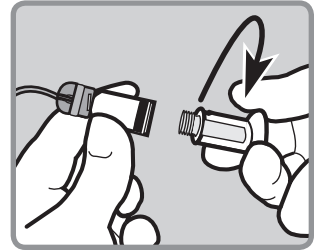


## To Connect the Tubing:

5. Tap side of reservoir to force any remaining airbubbles to rise to top. Push up on plunger rod until bubbles are out and some insulin is in tubing.

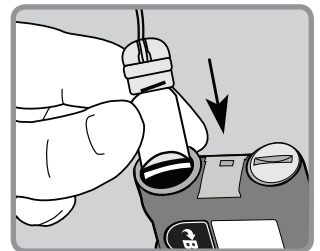


6. Turn plunger rod counter-clockwise until it unscrews from reservoir. Be careful not to pull out plunger rod from reservoir or insulin will spill out.

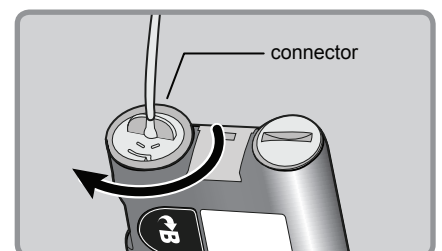


## To Fill the Tubing:

1. Press **ACT** so that **REWIND COMPLETE** appears. Insert newly filled reservoir into pump's reservoir compartment.

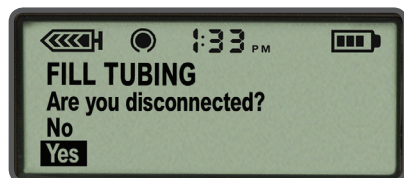


2. Turn reservoir clockwise until it locks in place.

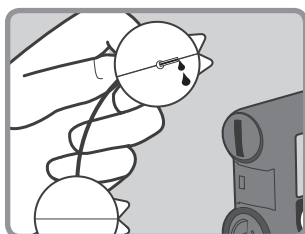
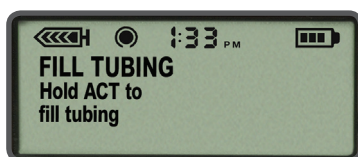


## To Fill the Tubing:

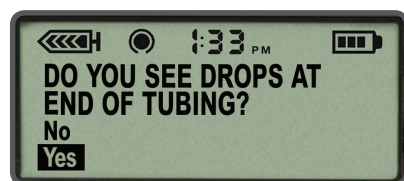
- Press **ACT** to go to **FILL TUBING** screen. Be sure infusion set is **NOT** connected to your body. Then select **Yes** and press **ACT**.



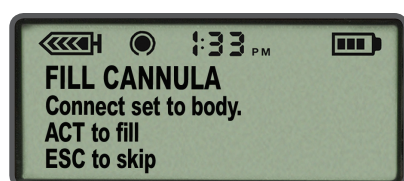
- Press and hold **ACT** to fill tubing. The pump will beep as tubing fills. Release **ACT** when you see drops at tip of connector needle. Then press **ESC**.



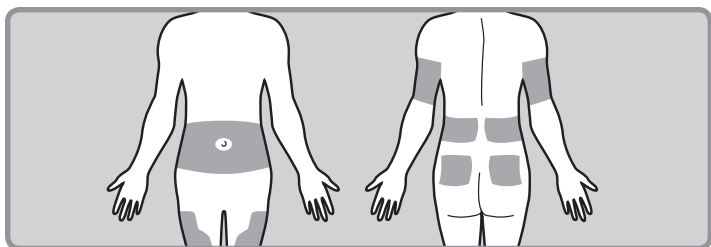
- If you see drops at end of connector needle and there are no air bubbles in the tubing, select **Yes** and press **ACT**.



- When the **FILL CANNULA** screen appears, press **ESC**. You are now ready to insert the Sure-T<sup>®</sup> infusion set.



## Choose Insertion Site:

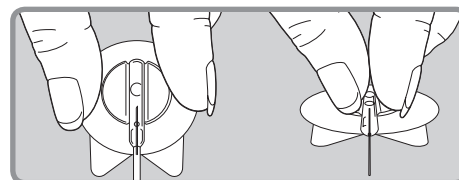


The best areas of the body to insert infusion set are shown in shaded areas of this drawing.

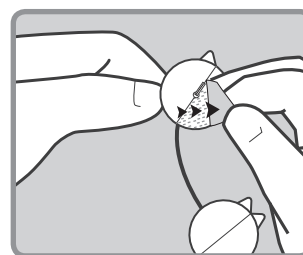
Clean the selected insertion site with alcohol or other antiseptic wipe.

## To Insert Sure-T<sup>®</sup> Infusion Set:

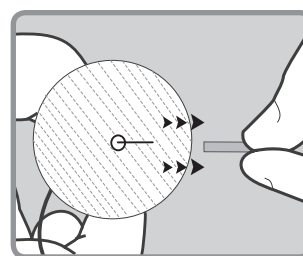
- Hold Sure-T<sup>®</sup> insertion piece by flipping the plastic wings upwards and pressing together.



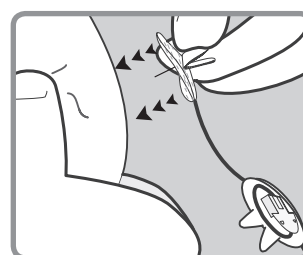
- Peel both pieces of the paper backing off of the Sure-T<sup>®</sup> insertion piece around the needle.



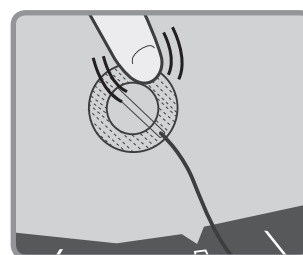
- Remove needle guard by pulling it off.



- With one hand, pinch up skin at prepared site. With the other hand, insert Sure-T<sup>®</sup> needle at 90 degree angle.



- Press adhesive securely to skin.



- Remove paper from second adhesive pad and secure it to skin. Be sure to place it on an area of your body that allows for easy disconnecting from tubing.

