





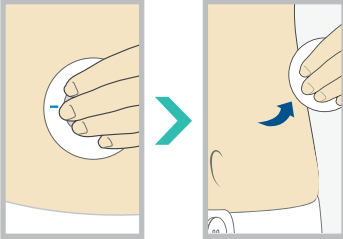
## START HERE


**1**  Wash your hands. Press **O**. Select **Options**.

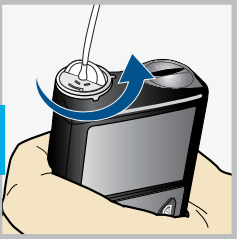
**2**  Select **Reservoir & Tubing**.


**3**  Select **New Reservoir**.


**4**  Remove the infusion set you have been using by loosening the adhesive and pulling away from body.




**5**  Remove the used reservoir from the pump.



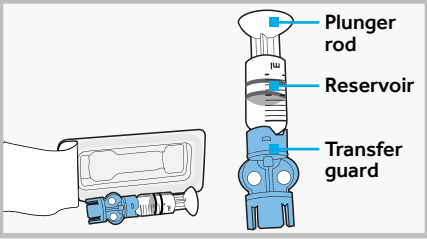
**6**  Select **Rewind**.

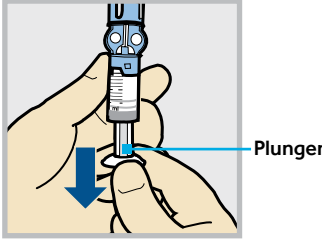


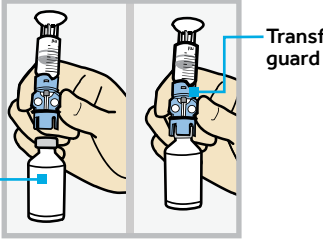
 **1. Fill reservoir.**  
**2. Connect tubing to reservoir.**  
**DO NOT CONNECT TO BODY.**

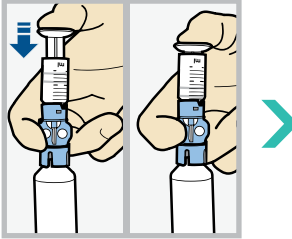
## FILL RESERVOIR & CONNECT TO THE INFUSION SET TUBING

Follow the next steps to fill reservoir with insulin and connect to the infusion set tubing.

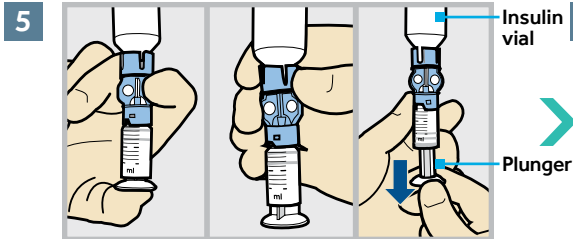
**1**  Remove from package. Make sure insulin vial is at room temperature to reduce the risk of air bubbles.

**2**  Pull plunger down to the amount that you plan to fill with insulin.

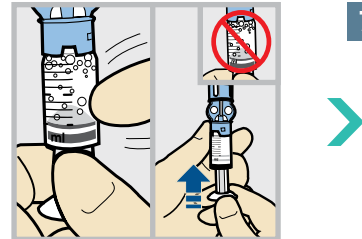
**3**  Wipe vial with alcohol. Place vial on table. Firmly press the blue transfer guard onto vial.

**4**  Push and hold plunger down.

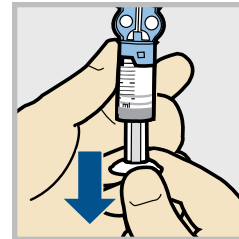
**WARNING** If insulin or any liquid gets inside the tubing connector, it can temporarily block the vents that allow the pump to properly fill the infusion set. This may result in the delivery of too little or too much insulin, which could cause hyperglycemia or hypoglycemia.



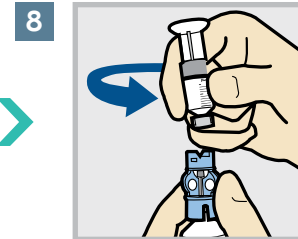
5 With your thumb still on the plunger, flip over so vial is on top. Release thumb and pull plunger down to fill with insulin.



6 Tap the reservoir to move air bubbles to top of reservoir. Push plunger up to move air into vial.



7 If needed, pull plunger back down to amount of insulin needed for 2-3 days.



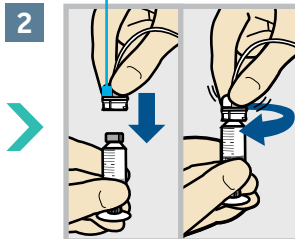
8 To avoid getting insulin on the top of the reservoir, turn vial over so it is upright. Hold transfer guard and turn reservoir counter-clockwise and remove from transfer guard.

## CONNECT RESERVOIR TO INFUSION SET

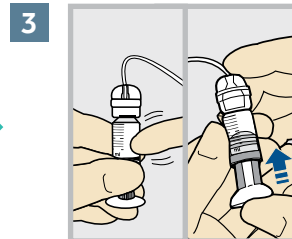
You will place the tubing connector onto the end of the infusion set to the filled reservoir.



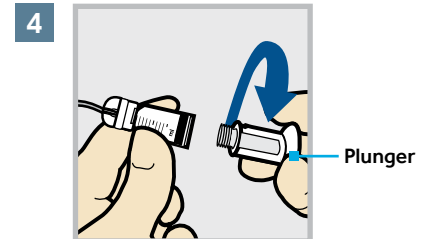
1 Remove infusion set from package. Remove the paper that holds the tubing together and unwind.



2 Gently push the tubing connector onto reservoir. Turn clockwise until locked. You will hear a click.



3 If you see air bubbles, tap reservoir to move them to top. Push plunger just a bit to move them into tubing.



4 Twist plunger counter-clockwise to loosen and remove.

### THE BACKLIGHT MAY HAVE TURNED OFF

Press any button to turn the screen back on.



Press **O** to open the menu. If the pump is locked, you will need to unlock the pump after pressing **O**.



Select **Load Reservoir** from the menu.



Select **Next**.

Continued on next page

## PLACE RESERVOIR INTO PUMP


Now place the filled reservoir into the reservoir compartment of the pump.

**1** New Reservoir

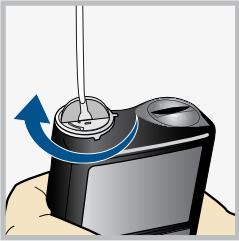
3. Place reservoir into pump and lock.  
DO NOT CONNECT TO BODY.

Next


Place reservoir into pump.



**2**



Turn clockwise until you feel reservoir lock into place.



**3** New Reservoir

3. Place reservoir into pump and lock.  
DO NOT CONNECT TO BODY.

Next

Select **Next**.

## LOAD RESERVOIR AND FILL TUBING


Follow these steps to load the reservoir and fill the tubing.

**1** Load Reservoir

Select Load and hold until complete.  
DO NOT CONNECT TO BODY.

Load Next

Select **Load** and keep holding **○**.




**2** Load Reservoir

Complete

DO NOT CONNECT TO BODY.

Load Next

When you see this screen, select **Next**.



**3** Fill Tubing

DO NOT CONNECT TO BODY.


Hold Fill until drops appear. Then select Next.

0.0 u

Fill Next

Drops at end of tubing

Select **Fill** and keep holding **○** until you see drops at the end of tubing, then let go.



**4** Fill Tubing

DO NOT CONNECT TO BODY.

Hold Fill until drops appear. Then select Next.

11.3 u

Fill Next

After you see drops, press **>** and select **Next**.

## INSERT INFUSION SET

Next, follow the steps to insert the infusion set into your body.

Fill Cannula?

1. Insert infusion set into body.  
2. Select Fill to fill cannula or Done if not needed.

Fill Done

**1**

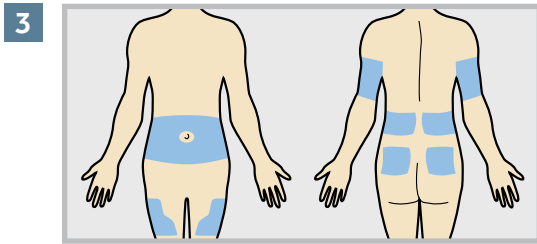


Remove the paper backing from the adhesive. Be careful not to touch the adhesive.

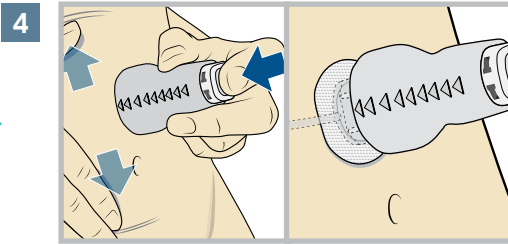
**2**



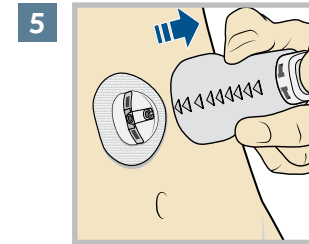
Remove the disconnect cover from the insertion device by gently squeezing the sides of the disconnect cover then pulling it away from the insertion device. Keep the disconnect cover for later use.



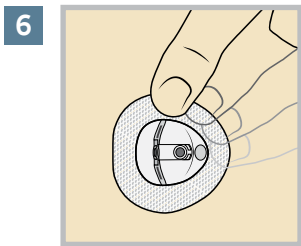
3 Choose an insertion site from the shaded areas shown here. Wipe with alcohol or other antiseptic.



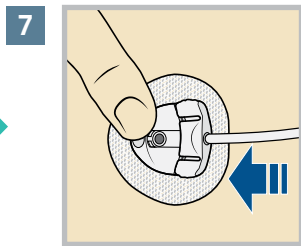
4 Stretch the skin until smooth. Place the insertion device in the desired location on your skin. The raised arrows indicate the direction to connect the tubing. Press the top button completely down to insert the infusion set.



5 Gently and carefully remove the insertion device by pulling straight away from your body.



6 Press the adhesive onto the skin with your finger. Replace the infusion set if the adhesive does not stick to the skin

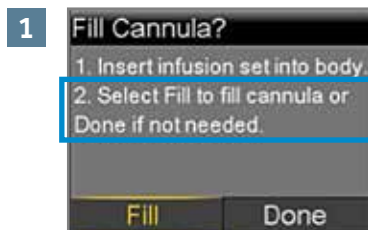


7 Gently hold the cannula housing steady with your finger. Then push the site connector straight into the cannula housing until you hear a click.

Dispose of the insertion device in an appropriate sharps container and in accordance with your local laws.

## FILL CANNULA

You will now fill the cannula, the little tube under your skin, with insulin.



Select **Fill**.

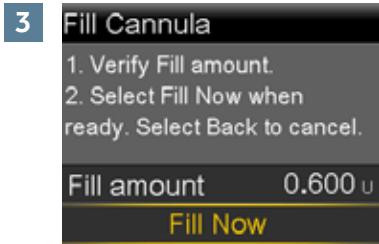


Select **Fill amount** and enter: 0.600 for both the 6mm cannula and 9mm cannula. Then press **Fill Now**.



**NOTE:** Your pump will remember the **Fill amount** that you used last. Always verify that the Fill amount is correct.

- If it is correct, press **▼** to **Fill Now** and press **○**.
- If it is incorrect, press **○**. Change to correct amount and press **○**. Select **Fill Now**.



Select **Fill Now**.



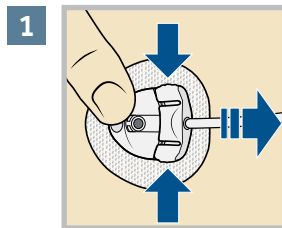
The Home screen displays the insulin as it fills the cannula.



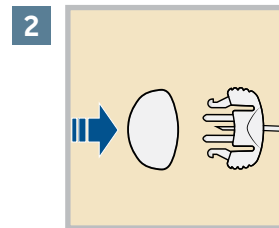
**NOTE:** Select **Stop Filling** if you need to stop, for example, if you notice the **Total** amount is incorrect. This should rarely happen if you have verified the **Fill amount** on the previous screen.

**Your infusion set change is now complete!**

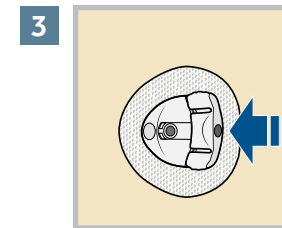
## DISCONNECTING THE INFUSION SET FROM YOUR BODY



To disconnect, gently hold the cannula housing steady with your finger. Then squeeze the sides of the site connector and pull it out from the cannula housing.

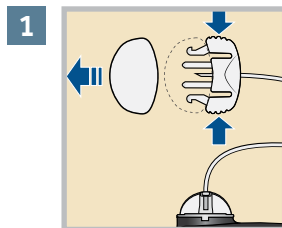


Put the white cap on the site connector.

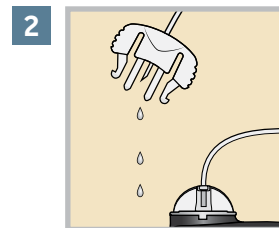


Put the disconnect cover on the cannula housing. Then push the cover into the cannula housing until you hear a click.

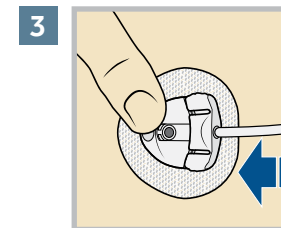
## RECONNECTING THE INFUSION SET TO YOUR BODY



Remove the white cap from the site connector by squeezing the side of the site connector then pulling the white cap off.



Ensure there is no air in the tubing. **ONLY** if there is air in the tubing: Fill the tubing with insulin and watch for drops as instructed. Do not leave any air in the tubing.



Use your finger to gently hold the cannula housing steady. Push the site connector into the cannula housing until you hear a click.