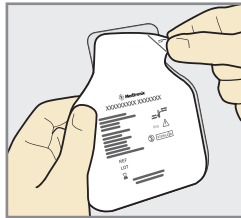


INSERTING A NEW SENSOR

Wash your hands and clean insertion site with alcohol.

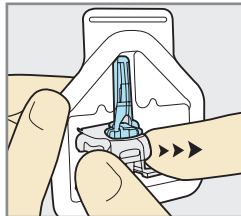
1. Open sensor package.

Pull corner of paper covering to open sensor package.



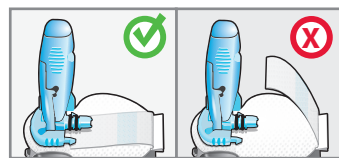
2a. Hold sensor by plastic pedestal.

Remove sensor with attached pedestal by holding pedestal only. Place sensor/pedestal on a clean, flat surface (such as a table).



2b. Tuck adhesive tab.

Make sure that sensor's adhesive tab is tucked under sensor connector and snaps.

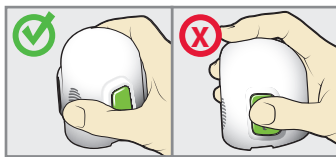
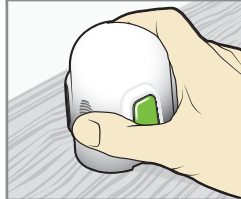
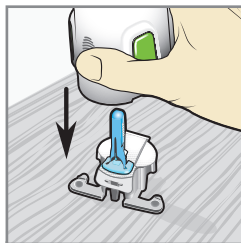


Correct

Incorrect

3. Load sensor into sserter.

Grip sserter exactly as shown with thumb on sserter thumb print. Do not hold green buttons. Push sserter down onto pedestal until base of sserter sits flat on table.



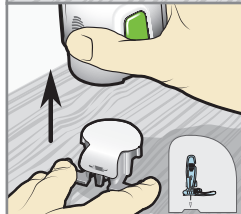
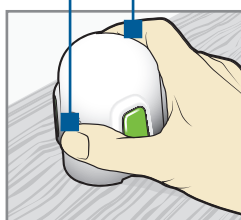
Correct

Incorrect

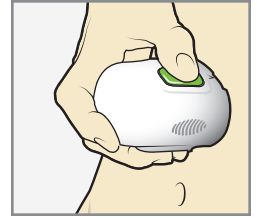
Fingers NOT holding green buttons

4. Detach sserter from pedestal.

To detach sserter from pedestal, grip sserter as shown, with thumb on thumb print on sserter. With other hand, place two fingers on pedestal arms and slowly pull sserter straight up. **Note: Make sure that pedestal is firmly on table before pulling sserter away. Warning: Do not detach pedestal from sserter in mid-air as this may damage sensor.**



5a. **Place sserter on body.** Hold sserter steadily against your cleaned insertion site, without pushing sserter too deeply into skin. **Note: Failing to hold sserter securely flat against body may allow sserter to spring back after pressing buttons and result in improper insertion of sensor.**

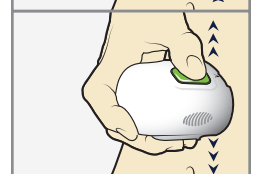


5b. **Insert sensor.** Press and release bump on both buttons at same time.



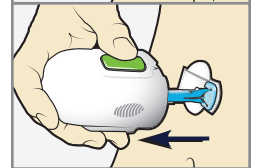
5c. **Hold sserter against body.**

Continue holding sserter against body to allow adhesive time to stick to skin.

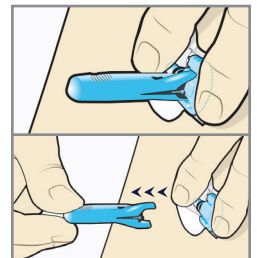


5d. **Remove sserter from body.**

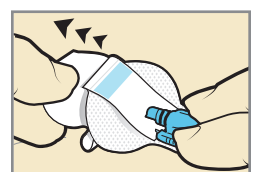
Slowly pull sserter away from skin, making sure buttons are not pressed.



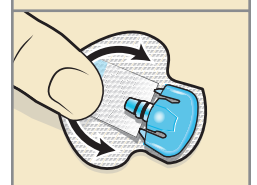
6. **Remove needle housing.** Gently hold base of sensor against skin with one hand. With other hand, hold the needle housing at the top and slowly pull straight out, away from the sensor. Dispose of needle housing in a sharps container.



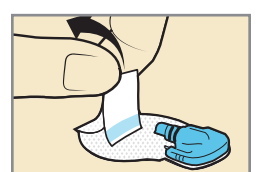
7a. **Remove adhesive pad liner.** Hold sensor in place and gently remove liner from under adhesive pad.



7b. **Press entire adhesive pad to skin.** Firmly press adhesive against skin and smooth entire adhesive pad so it sticks to skin. **NOTE: Enlite adhesive is pressure-sensitive. Continue applying pressure to ensure sensor remains inserted in skin for whole 6 days of wear.**

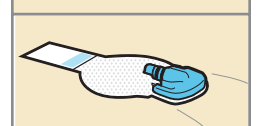


8a. **Untuck adhesive tab.** Untuck adhesive tab from under sensor connector.



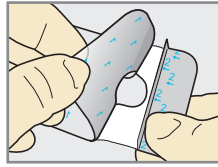
8b. **Straighten adhesive tab.**

Straighten adhesive tab so it lies flat against your skin, but do not remove adhesive liner yet.



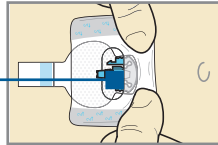
TAPING THE SENSOR

1. Remove liner marked 1 from overtape. Do not remove two smaller liners marked 2 from sides of overtape.

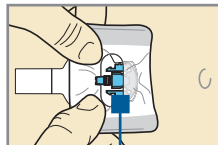


2. **Important: Attach overtape to both sensor and skin next to sensor.**

Tape is over both sensor and skin

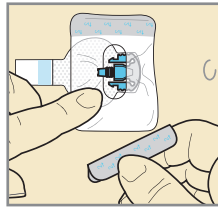


3. Stretch remaining part of overtape around sensor connector so that overtape sticks to curved adhesive pad and does not block sensor connector and snaps. **Continue to press overtape to your skin to help ensure that it sticks securely.**

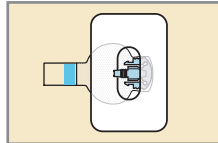


Connector and snaps in hole of tape

4. Remove two liners marked 2 from the sides of the overtape and press adhesive against the skin.

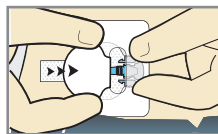


5. This image is an example of overtape applied correctly. Sensor connector and snaps are not covered and appear in opening of overtape.

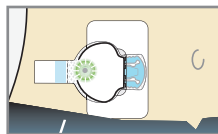


CONNECTING THE TRANSMITTER

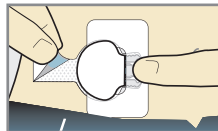
1. With one hand, hold sensor in place. With other hand, connect transmitter to sensor.



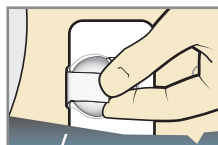
2. You will hear a faint "click" indicating that two components are connected. Check for a green light to flash on transmitter.



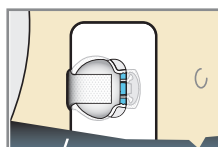
3. Remove liner on adhesive tab.



4. Fold adhesive tab over and onto transmitter. **Important: Be careful not to pull adhesive tab too tightly or it may cause transmitter to pull from sensor connector.**

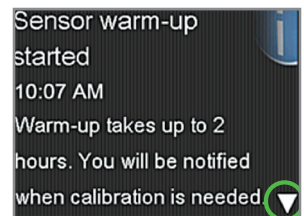
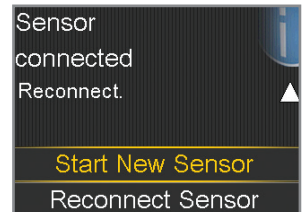
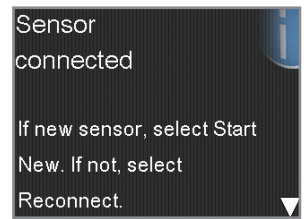


5. Press adhesive onto transmitter.

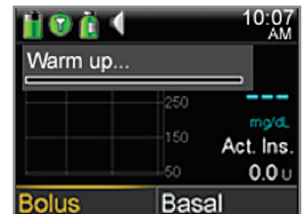


STARTING THE SENSOR

1. Once **Sensor connected** message appears, press . *This typically takes less than a minute, but may take up to 10 minutes.*
2. Select **Start New Sensor**.
3. **Sensor warm-up started** message will appear. Press and then to clear.



Warm up... will appear on the Home screen until sensor is ready for first calibration.



CALIBRATING

1. Select **Snooze**.
2. Pump will display this screen.
3. Test your BG and use it to calibrate sensor.
4. Once calibration BG is entered, this screen will display. You will begin receiving sensor glucose readings in 10-15 minutes.

